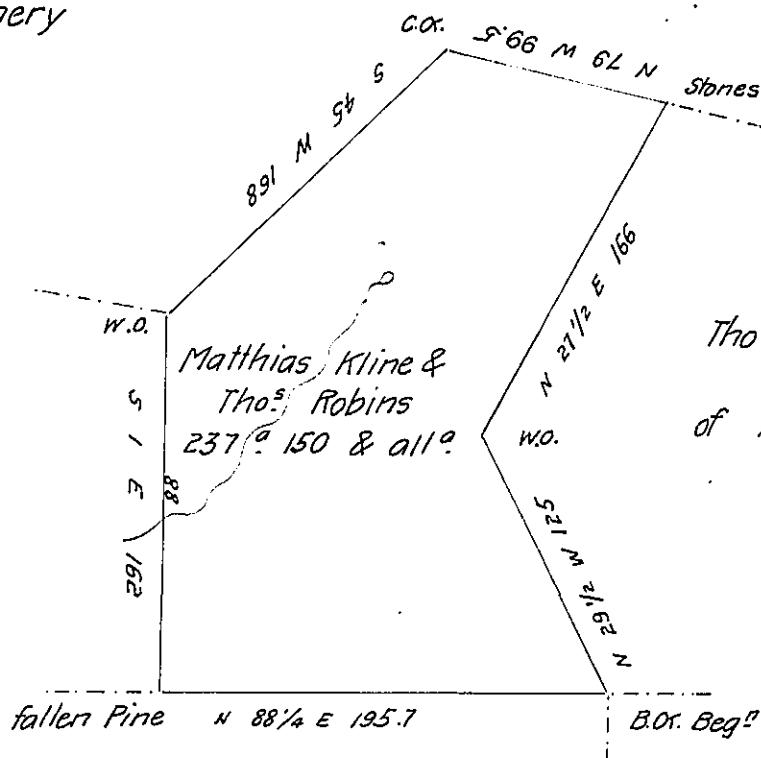


Matthias Kline in Right of  
R. Montgomery

Matthias Kline



Tho. Robins in R.  
of A. Kline.

Abraham Kline

Situate in Fishing Creek Township in Northumberland County adjoining Abraham Kline & others Containing two hundred & thirty seven acres & one hundred and fifty Perches & the Allowance. Surveyed on the 4<sup>th</sup> day of December 1793 unto Matthias Kline & Thomas Robins by virtue of their Warrant dated the 19<sup>th</sup> day of December 1792

Resurveyd agreeable to the above Dft November 4<sup>th</sup> 1812

Tho. Woodside D.S.

Andrew Porter Esqr  
Surveyor General.

IN TESTIMONY that the above is a copy of the original remaining on file in the Department of Internal Affairs of Pennsylvania, made conformably to an Act of Assembly approved the 16th day of February, 1833, I have hereunto set my Hand and caused the Seal of said Department to be affixed at Harrisburg, this eight day of June 1905

*Geo. P. ...*  
Secretary of Internal Affairs.